

ARE WE COMPATIBLE?

We have done our best to make the online Essential Navigation and Seamanship course compatible across a wide range of computers, operating systems and web browsers. However, it is hard to please all computers all the time!

Supported platforms:

Windows XP, Windows Vista, Windows 7, Mac OS X 10.6

Minimum hardware requirement:

1.0GHz Intel processor or better
128MB free RAM
100MB free hard disk space
32 bit colour graphics card
1024 x 768 screen resolution
Sound card and speakers or headphones
Keyboard and mouse

Supported web browsers:

Internet Explorer version 6, 7 and 8 (Windows only)
Firefox version 3
Safari version 4

Software requirements:

Flash Player 8
JavaScript must be enabled in your web browser.

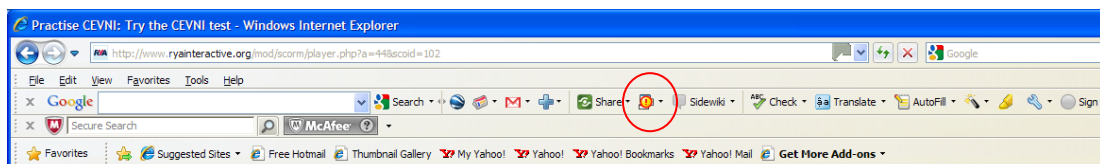
Bandwith:

A connection speed of 512kbps is required.

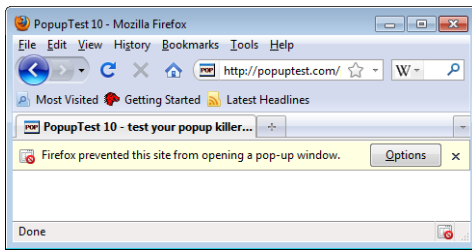
Enabling the course:

You will need to **enable pop-ups** in your web browser. If you are worried about security, you should be able to specify the website for which you are allowing pop-ups.

Please note that some toolbars, such as the Google toolbar, have their own pop-up blockers in addition to the blocker within your web browser. You may therefore need to enable pop-ups in both your browser and the toolbar. As an example, within the Google toolbar, this is done by clicking on the arrow next to the yellow circle with red exclamation mark and selecting 'Always allow pop-ups'. The button is circled in red below:



When **Firefox** blocks a pop-up a yellow tool bar will appear at the top of the screen and a small icon will appear in the status bar at the bottom. You need to click on the *Options* button which will then give you some choices:



- Allow/Block pop-ups for this site
- Edit Pop-up Blocker Options
- Don't show this message when pop-ups are blocked
- (Show the blocked pop-up)

Click 'Allow pop-up for this site.'

Troubleshooting

If the test doesn't launch automatically:

This is almost always because your pop-up blocker is stopping the course opening. Remember, even if you have enabled pop-ups in your web browser, you may also need to enable them in a secondary toolbar such as Google (see above).

Help!

If you are struggling, please email interactive@rya.org.uk giving details of the error messages or problems that you are encountering.